

## “Ambient Weaving” exhibition 17 April to 18 July 2021

Hosoo Co., Ltd. is pleased to announce that Hosoo Gallery will hold the *Ambient Weaving* exhibition from April 17th to July 18th 2021.

Since 2020, Hosoo Co., Ltd. has been conducting research and development in collaboration with the University of Tokyo Graduate School of Interfaculty Initiative in Information Studies Yasuaki Kakehi Laboratory and Zozo Technologies Inc. towards new textiles that combine beauty with functionality when traditional crafts meets cutting-edge technologies.

*Ambient Weaving* refers to textiles that express the ambient environment’s characteristics and where the actual ambient environment is woven into the textiles. Nishijin textiles have always been innovative with incorporating cutting-edge technologies. Through this collaborative research project undertaken by Hosoo Co., Ltd., Yasuaki Kakehi Laboratory of the University of Tokyo, and Zozo Technologies, advanced materials and devices were developed and incorporated into Hosoo textiles. In its pursuit of beauty for over 1200 years with its distinctive structures and design, the research project experimented with various levels of functionality and representations of the surrounding ambient environment’s characteristics using Hosoo textile as the medium.

This exhibition will showcase several research prototypes, which include color changes in the textile affected by external temperatures to textiles that harden under ultraviolet light. In addition to the aim of innovative design, this collaborative research project has recently accelerated the revolution of textile functionality. The challenge was to find compatibility between function and design of textiles, when developing design possibilities using new functions.

The history of textiles is as impressive as the history of humankind. Looking back, textiles can be simply viewed as creations from dialogues with humankind or the environment. Not only for yarns used in textiles, plant dyeing also uses natural materials such as plant and animal fibers. In Japan, motifs of beautiful Japanese nature have been extensively used in textiles.

In this day and age, unspoiled nature is no longer common and instead, living in artificial environments is the norm. With significant human impact on the planet’s geology and ecosystems and the concept of “nature” itself continuing to be a point of discussion and review, what kind of new entity will ambient environments and textiles become? With this perspective as the foundation, this exhibition presents the modern state of human beings, the environment, and textiles with experimentations to expand new representations and experiences of function and design compatibility in textiles through the combination of traditional crafts and cutting-edge technologies.

### **Ambient Weaving exhibition**

Dates: 17 April–18 July 2021

Venue: Hosoo Gallery

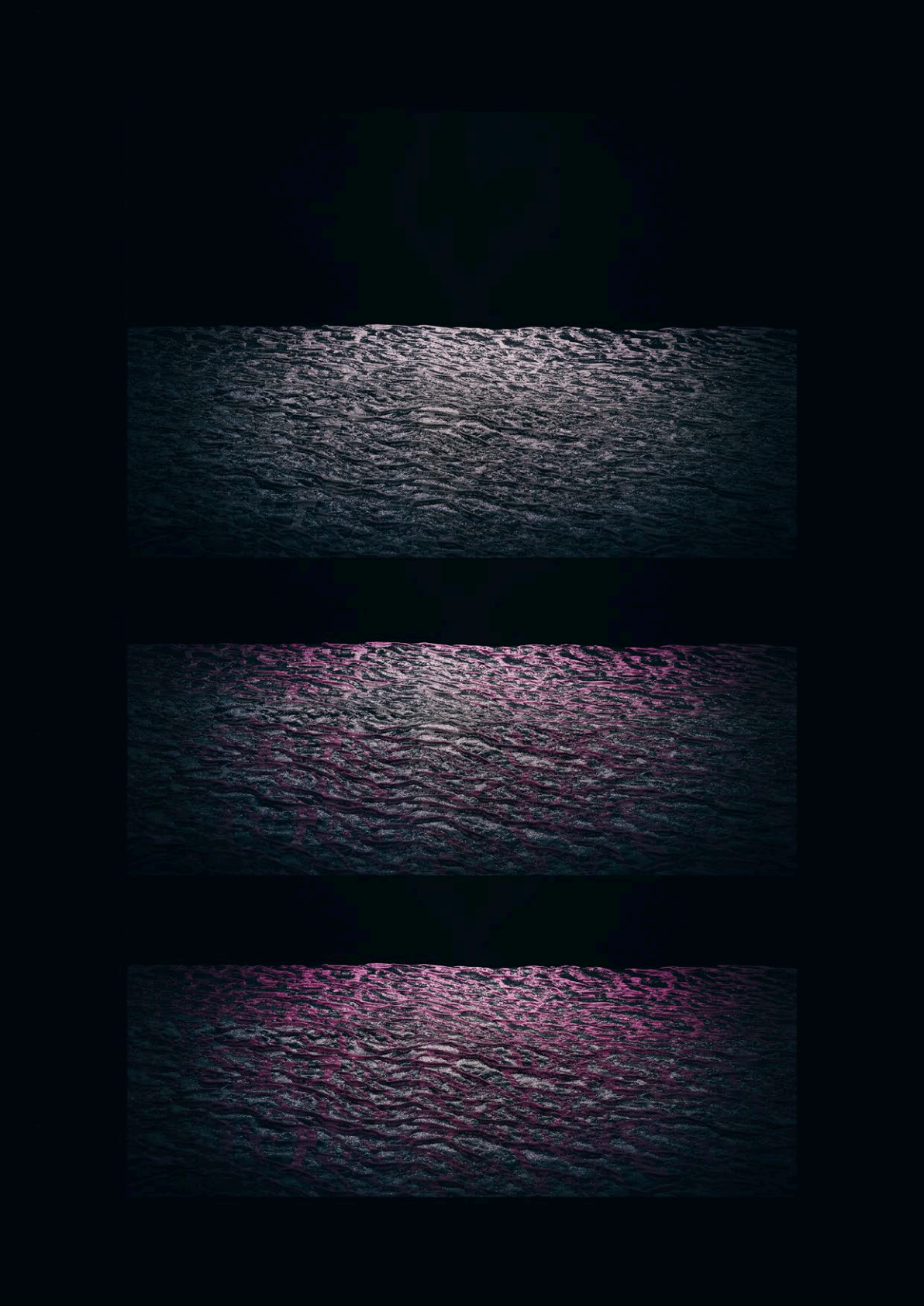
Hosoo Flagship Store 2nd Floor

412 Kakimoto-cho Nakagyo-ku Kyoto 604-8173

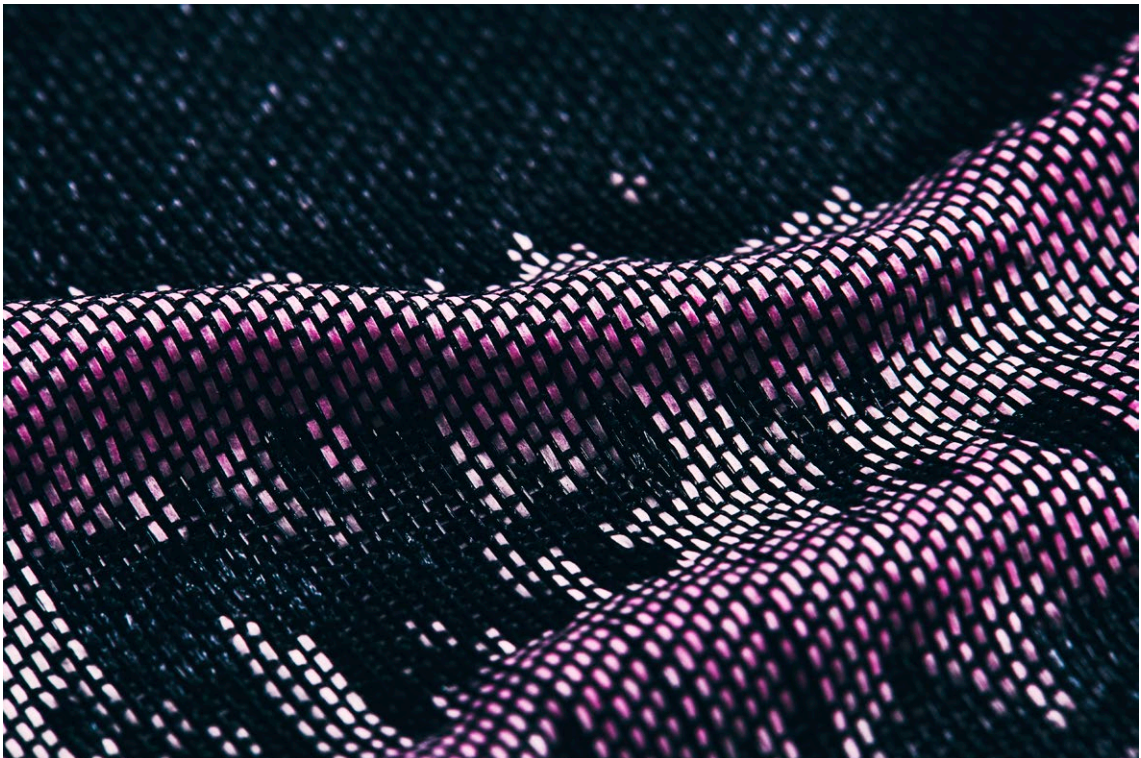
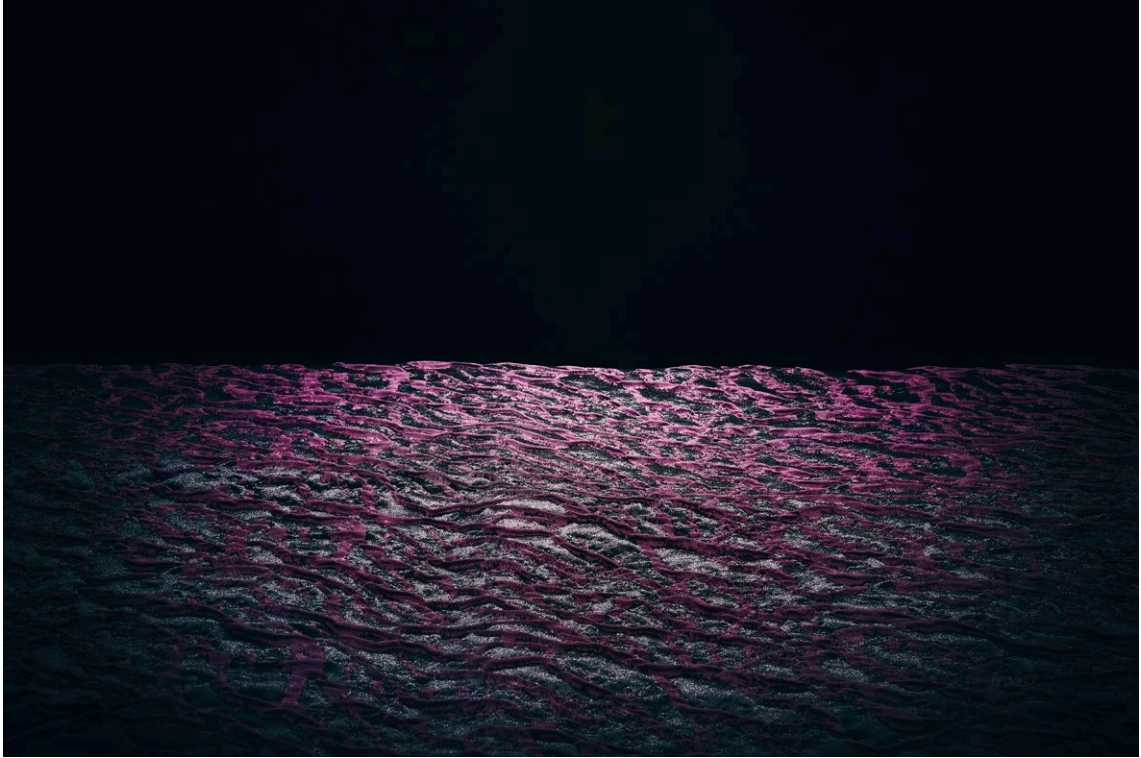
Tel: +81 (0)75-221-8888

Hours: 10:30–18:00 (Admissions close 15 minutes prior to closing time)

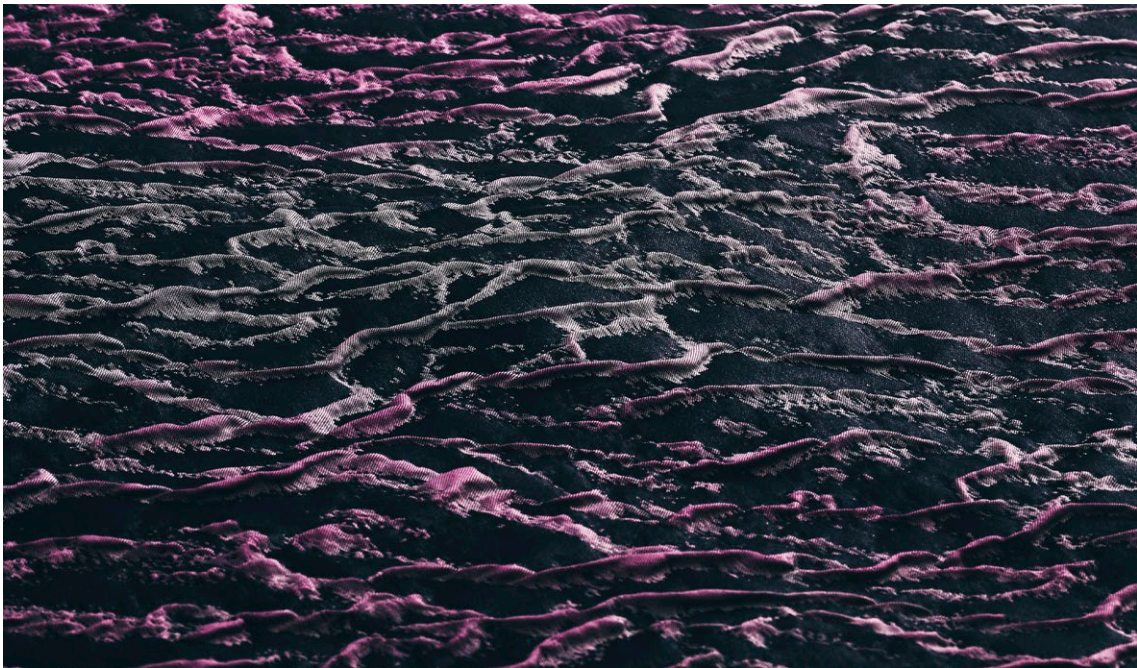
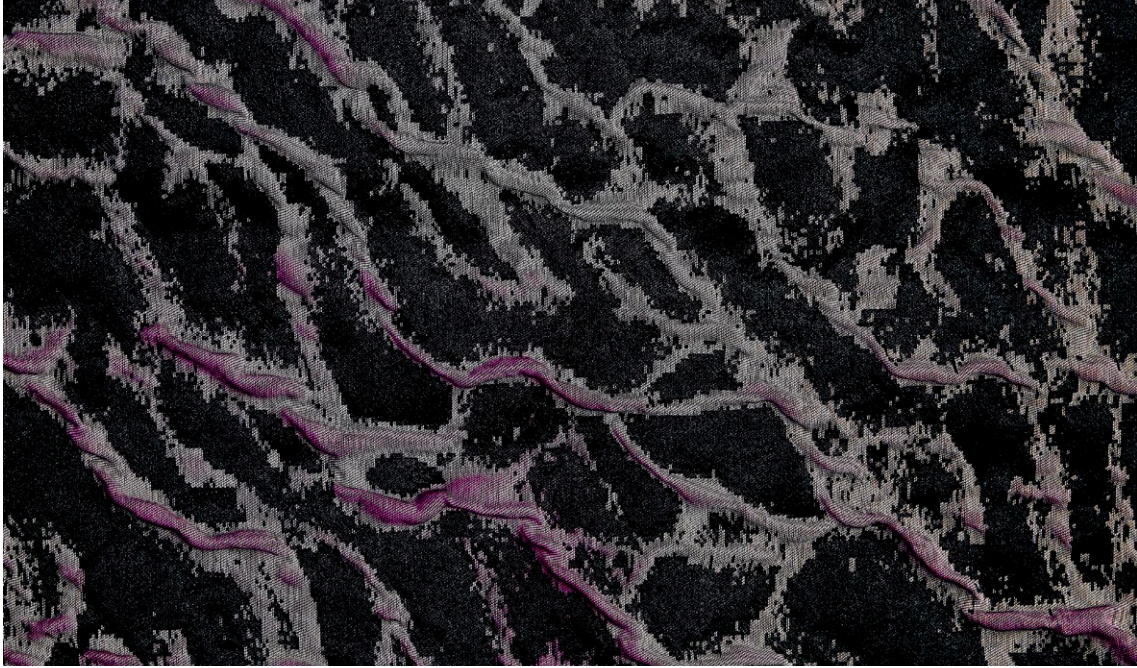
Closed on public holidays. Admission is Free.











**HOSOO Co., Ltd.**

Hosoo was founded in 1688 in the Nishijin district of Kyoto, Japan to serve patrons from the main temples. With a history of more than 1,200 years, Nishijin textiles, a pre-dyed yarn textile of Kyoto, have been admired and cherished by the aristocracy, samurai class, and affluent members of society. Currently, utilizing the traditional Nishijin weaving techniques used for making kimono and obi-belts, unique textiles with a sense of timeless design and innovation continues to expand in Japan and the overseas luxury markets. [www.hosoo.co.jp](http://www.hosoo.co.jp)

